

# SOUTHERN LEHIGH TRIBUNE

ESTABLISHED 2010 A.D.

Covering Upper Saucon, Lower Milford, and Coopersburg

MARCH 26, 2011 A.D.

WWW.SOLEHI.COM

\$2.00

## Lower Milford Benefits From Civic-Minded Citizens

By Brenda Wilt  
*Courtesy of Pennsylvania Township News*

LOWER MILFORD -- If it weren't for a very talented resident volunteer, Lower Milford might not be dedicating its first municipal park at the end of April. Gary Campbell, principal of Campbell Natural Landscape Design in Coopersburg, volunteered his talent to design and draw plans for the new four-acre park.

"Gary had shown an interest in the township building and grounds and offered us advice on landscaping," township manager Ellen Koplin says. When the township created a recreation and open space board in 2006, he was a natural fit. Now, thanks to his skill and generosity, the grant that the township received from the state Department of Conservation and Natural Resources to construct the park was able to go into construction, rather than design.

Lower Milford is just one of many townships that have tapped into the talent of their residents. With the help of these capable citizens, townships can overcome the constraints of limited resources and offer their communities a wider range of services.

This reservoir of human capital includes all age groups, from Baby Boomers and senior citizens to teens and college students, all of whom have particular gifts and experience that can prove invaluable to their communities.

SEE VOLUNTEER PG 3



**Bee Natural Health Store at the Village Shopping Center on Main St. in Coopersburg offers a wide variety of fresh, local, and natural products. Go to [www.beenaturalhealth.com](http://www.beenaturalhealth.com) for info.** Photo by Judd Wilson.

## It's Only Natural

By Judd Wilson

COOPERSBURG -- Having worked in nursing and dentistry, Wendy Sinko knew a thing or two about health. As a mom cooking for her family every day, she wanted the best for her two kids, but was having a hard time finding the kind of locally- and organically-grown foods she wanted. The result? She created Bee Natural, a health food store in the Village Shopping Center here that offers raw cow and goat milk, grass-fed beef, raw and aged local cheeses, vitamins, supplements, gluten-free foods, environmentally-friendly cleaning products, health and beauty products, homeopathic remedies, essential oils, and more.

Growing up, Sinko said she "didn't know what a canned vegetable was." Everything she ate as a

child could be traced back to her family's land or to another farmer's down the road. When she got pregnant 12 years ago, she began taking a hard look at what she was giving her growing family to eat. Why give her family canned vegetables when there have been multiple scares about the tomatoes, spinach, and other products on store shelves in the past decade?

Sinko drew on her diverse background in the medical and dental fields plus her work as husband Mike's payroll and tax administrator to launch Bee Natural in spring 2008. She began what is now the Misty Jaymes Fitness Studio at the same time, and not too long after started up the Coopersburg Farmers' Market. Things got too busy, she said,

SEE NATURAL PG 4

## PSU Lehigh Valley Helps Iraq Veteran Graduate

By Allison Goodin  
*Courtesy of Penn State Lehigh Valley*

PENN STATE LEHIGH VALLEY -- During the fall semester, Penn State Lehigh Valley senior David Goodpaster found himself just a few credits short of qualifying for graduation this May. However, knowing that Goodpaster also serves as the PA Army National Guard's senior counterintelligence warrant officer, Professor Carolina McCluskey felt sure his military experience could help make up the difference. Together they came up with a plan for Goodpaster to give two presentations on terrorism in the Middle East to the campus and take an online course to satisfy the requirements and make graduation in May possible.

On any given day in Iraq, American military personnel work to gather information that will aid the efforts to restore peace in the area. For those tasked with this job, including Goodpaster, the often antithetical views of the people they are working with can present a challenge. As the sheik of one tribe once explained, if a man from his village was killed by a neighboring village, it would not be uncommon for that village to offer the life of another human being to settle the score and avoid war.

This scene is about as far away as you can get from the sweetest place on Earth, Hershey, Pa., where Goodpaster's family has resided since he was seventeen. But the 'eye for an eye' solution to peace-keeping is as much a part of those villagers' lives as chocolate

SEE GRADUATE PG 8

INSIDE

### LADIES' NIGHT

Local moms raise money for education.

pg. 5

### BULLDOGGING

DeSales athletes outperform the competition.

pg. 12



### MAIL CALL

Letters to the editor come pouring in.

pg. 10

# BRIEFS

**Clean Up** activities across Southern Lehigh are scheduled for April 16. Lower Milford Township will hold its clean-up from 8 a.m. to 12 p.m. with lunch provided afterwards. Volunteers should show up at 7:45 a.m. at the Township Municipal Building.

Upper Saucon Township will hold its clean-up from 9 a.m. to 12 p.m. For a list of items being accepted please stop by the Township Municipal Building or Coopersburg Borough Office. Fees apply to certain items for the recycling cost of hazardous or data sensitive material. To sign up or for more information please contact Erin Frederick at [uppersauconeac@gmail.com](mailto:uppersauconeac@gmail.com) or 610-391-9583 ext.25

**Coopersburg Borough** announced that curbside brush pickup will be the week of April 25 for one week only. Please place your brush and small branches on the curb for pickup. Branches should be no more than 6 inches in diameter. To learn more, please call the Borough Office at 610-282-3307 Monday through Friday, 9 a.m. to 4:30 p.m.

The borough also announced that the compost site will be open

from March 26 - Dec. 5, Monday through Friday, 7 a.m. to 3 p.m., and Saturday, 8 a.m. to noon. On Wednesdays, the site will remain open until 7 p.m. from April 20 - Oct. 28.

**Coopersburg Family Chiropractic** will present a free health and wellness seminar on April 6 at 6:30 p.m. Register at the front desk.

**Coopersburg Lions Club** will hold its 3rd Annual Basket Bingo on April 3 to benefit Boy Scout Troop #364. For more information, please contact Richard Nalichowski at 610-282-4026 or [Lanan3@yahoo.com](mailto:Lanan3@yahoo.com), or Tara Smith at 610-484-866-6112 or [lionbasketbingo@gmail.com](mailto:lionbasketbingo@gmail.com).

**Fifth Annual Coopersburg 5K, Kids' Fun Run, and Health and Wellness Expo** will take place May 28. See page 5 for the route map. To register or learn more, visit [www.coopersburg.org](http://www.coopersburg.org) or contact Jennifer Wescoe-Schaninger Monday through Friday, 9 a.m. to 3 p.m., at 484-553-6340 or [jwschaninger@hotmail.com](mailto:jwschaninger@hotmail.com).

**First Church of Christ, Scientist** in Allentown presents "Prayer in a Postmodern World" on April 3 at 2 p.m. in Oberkotter Hall at Cedar

Crest College in Allentown. For more information, contact [allentownchurch@gmail.com](mailto:allentownchurch@gmail.com) or call 610-432-1114.

**Kiwanis Club of Southern Lehigh** will hold its annual Easter Egg Hunt at Upper Saucon Township Community Park on April 16. Kiwanis also present the 3rd Annual 5K Run/Walk on May 14 at the Upper Saucon Township Community Park. See page 6 for a registration form, or register online at [www.active.com](http://www.active.com).

**Liberty Bell Elementary School** will hold Spanish immersion program sign-ups on March 30 at 7:30 a.m.

**Rotary Club of Saucon** will meet on March 29 at 7:30 a.m. in the University Center Building at DeSales University. District 7430 Rotarians will hold their assembly at DeSales University on April 2, and will also hold the 1st Annual Purple Pinkie 5K Run/Walk there on April 3.

**Southern Lehigh Chamber of Commerce** will present "How to Turn Health and Wellness in the Workplace into Dollars" April 13 at 7:30 a.m. in the University Center Building at DeSales University.

Chamber members \$15, future members \$30. To register or learn more, contact Ellie Passman at 610-841-5804 or [elliiep@lehighvalleychamber.org](mailto:elliiep@lehighvalleychamber.org).

**Southern Lehigh Education Foundation** will meet on April 4 at 7:30 p.m. in the School District Administrative Offices Building.

**Southern Lehigh School Board** will meet on March 28 at 7:30 p.m.

**State Sen. Bob Mensch** announced that tax returns will be due on Monday, April 18 this year instead of Friday, April 15 due to a holiday in Washington D.C. For more details, please see page 10.

**Upper Saucon Township Planning & Zoning Committee** meeting that was scheduled for March 28 at 10 a.m. has been rescheduled to March 30 at 9 a.m. The Open Space Study Committee will meet on March 28 at 5:30 p.m.

Female high school seniors may be eligible for a \$500 college scholarship from the **Womens' Business Council** of the Greater Lehigh Valley Chamber of Commerce. Contact Danielle Joseph at 610-841-5851 or [daniellej@lehighvalleychamber.org](mailto:daniellej@lehighvalleychamber.org) to learn more.

## Word Search # 11 -- March Madness

T H R E E P O I N T E R P P  
H O C V I N R A R F D K L I  
C O U R T F H E R N O S B H  
S J W R B S C E F E R C R S  
T S U S N T R Q V E W O A N  
U H M M E A A B E T R R C O  
D O N S P N M G R X M E K I  
E O T H G I E E T I L E E P  
N T J S K L E Y N S E E T M  
T M Y S L H F N O T R H I A  
S E N O C B E M N E T F M H  
P A C G M M A D N E S S E C  
F I N A L F O U R W U P E S  
R Y L L A B T E K S A B V E



March Madness is in full swing this weekend. Only eight teams remain in the NCAA Men's Division I Basketball Tournament. *Bracket courtesy of NCAA.com.*

**Basketball  
Bracket  
Championship  
Cheer  
College  
Court  
Elite Eight  
Fans  
Final Four  
Jump**

**Madness  
March  
Net  
Referee  
Score  
Shoot  
Students  
Sweet Sixteen  
Three Pointer  
Tournament**

Word Search #10 Key--First Signs of Spring

R K C H R S Y W V B N M S B  
T L V E S G U B I R D S L E  
C F B N E E R G R A S K I G  
O D W H Q M R Y X N O J D I  
L E I A A I E F B I N E O N  
D S N A R A E L E A P S F N  
F U D N J M R R T R S G F I  
D S J I A E I E H I K E A N  
S E F I W A U O D M N I D G  
Q E I B H Q N N V M F G N H  
U G H S U C O R C E Z I O N  
Y W E O H S Y I W D R O V N  
I R B Z M S A E U P Z U E N  
F B N R Y N N U S N O W E B

**VOLUNTEER** FROM PG 1  
 America's Baby Boomers, those born between 1946 and 1964, bring a wealth of knowledge to volunteer work. More than any other demographic, volunteers in this group want to put their skills to use, not just perform "grunt work." In fact, national statistics show that Baby Boomers who are asked to perform general labor or supply transportation are the least likely to volunteer the next year.

The Corporation for National and Community Service, the parent organization for such volunteer agencies as AmeriCorps and Senior Corps, reports that Baby Boomers volunteer at higher rates than past generations did at roughly the same age. They are also the most educated group of volunteers, which make them a valuable resource for local governments.

In townships, planning commissions, zoning hearing boards, parks and recreation boards, and other such groups are largely populated with Baby Boomers who are still in the workforce. These volunteer advisory positions allow Boomers to bring their particular skill sets to the table, from engineering and construction to law, agriculture, business, and so on. Statistics show that Boomers whose volunteer activity involves



**Volunteers such as Lowell and Gail Linde have helped make Lower Milford Township's annual fall festival and silent auction a success.**  
*Photos by Ellen Koplín.*

professional or management tasks are the most likely to return from year to year.

Lower Milford Township's annual fall festival includes a silent auction that is almost single-handedly organized by a volunteer. Shirley Selgrath signed up for the festival committee and used the knowledge she had gained helping a neighboring municipality with its community celebration to make

the silent auction a roaring success. Although she recently retired, she was working full-time for a local realtor when she began helping the township. "She is a real example of selfless volunteerism," manager Ellen Koplín says.

Another township resident, Denise Holub, who has a green thumb and beautiful gardens of her own, volunteers to help maintain the flower beds at the municipal

building, Koplín says. She is also the alternate for the township's zoning hearing board.

As Baby Boomers age — the oldest of them are now eligible for Social Security — they will join another pool of volunteers that many townships rely on for valuable help: retirees and senior citizens.

Many retirees and senior citizens have a lot of time on their hands, time that townships can put to good use.

Retired Baby Boomers Lowell and Gail Linde are very active in Lower Milford Township. Lowell volunteers his time as a photographer, chronicling township events and special projects, manager Ellen Koplín says. He also chairs the historical commission and vacancy board and serves on the agricultural security area advisory committee. Gail, a retired schoolteacher, has helped with the township's fall festival, along with her husband, and serves on the township's planning commission.

*Reprinted with the permission of the Pennsylvania Township News, the official monthly magazine of the Pennsylvania State Association of Township Supervisors.*



**Phone: 610-967-1853**

**Serving the Coopersburg, Emmaus and Macungie areas**

**Email: fivestarlawns@hotmail.com**

- Lawn Mowing
- Spring Cleanups
- Fall Cleanups
- Fertilization
- Snow Plowing
- Fully Insured
- Free Estimates



***"How to Turn Health and Wellness in the Workplace into Dollars"***

Presented by the Southern Lehigh Chamber of Commerce

Wednesday, April 13  
 7:30 a.m. - 9 a.m.  
 DeSales University

\$15 Chamber member  
 \$30 Future member

Featuring Bob Knauss from Employee Employer Solutions and Scott DiNardo from Wellness Coaches USA

To register or learn more, contact Ellie Passman at 610-841-5804 or [elliep@lehighvalleychamber.org](mailto:elliep@lehighvalleychamber.org)

**NATURAL** FROM PG 1

and it was a “miracle” that Jaymes came along at the right time looking to expand her fitness business. Selling the thriving fitness studio to Jaymes was a “perfect match,” Sinko said. Now she focuses her time on Bee Natural and the Coopersburg Farmers’ Market, which like Bee Natural aims to promote health and local agriculture.

Customers keep discovering Bee Natural, she said, and are often surprised to learn that the store has been in Coopersburg for three years. Signage regulations make publicity a little difficult, she said, and for years people were accustomed to the location being a doctor’s office. But people keep streaming into Bee Natural to find answers for their health concerns. Customeres purchase what they can afford and what they're concerned about, Sinko explained. Whenever Dr. Mehmet Oz talks about something on his show, Sinko said, dozens of people show up that week asking for the product.

Sinko said she is moving towards specialty food products since large grocers are expanding their organic food offerings. But unlike many



**Bee Natural offers raw cow and goat milk, grass-fed beef, raw and aged local cheeses, vitamins, gluten-free foods, environmentally-friendly cleaning products, and much more.** Photo by Judd Wilson.

of them, Sinko takes pride in the fact that she knows where her food comes from. On one occasion, she had the rare opportunity to tour the Amish farms where much of Bee Natural’s food comes from. The farmers went into great detail about how they raise their chickens, cows, and other animals, and showed their guests all around the farms, she said. It was truly a memorable experience.

In addition to food from the Amish, Sinko features tofu from Allentown, salsa from the Easton Salsa Company, and fresh lunch items such as vegan salads from Balasia Green World Cafe. Recently the store has added therapeutic massage and Reiki sessions. Sinko plans on adding the Nature’s Plus line of vitamins in the next 4-6 weeks.

Bee Natural is open Monday through Thursday 9:30 a.m. to 7 p.m., Friday 9:30 a.m. to 6 p.m., and Saturday 9:30 a.m. to 3 p.m. The store is located in the Village Shopping Center at 21 North Main St. in Coopersburg. To learn more, go to [www.beenaturalhealth.com](http://www.beenaturalhealth.com) or call 610-282-0230.

## Upper Saucon Supervisors Talk Parks

By Judd Wilson

**UPPER SAUCON** -- The Upper Saucon Township Board of Supervisors met on Monday night to discuss park grant applications and rules for its new trail.

Vice Chairman Stephen Wagner participated via teleconference. Supervisor John Gilda, Jr. and Chairman Miro Gutzmirtl were not present at the meeting.

Back in 2000-2001, said Township Manager Tom Beil, the township bought 80 acres in the southeastern portion of the township to be the second nine holes of the Tumblebrook Golf Course. As it turned out, he said, the land was never used for that purpose. In 2006 the park and recreation committee identified the need for a park on the western side of Hwy. 309, he said, and pointed to this land known as the Haring Tract as a potential location. Beil asked supervisors to approve moving forward with an application for a 50 percent matching grant with the Department of Conservation and Natural Resources.

Beil also asked that they allow him to send in a grant application for the for the Curly Horse

Park project, located near the subdivision of the same name. According to Beil, a developer interested in building an age-qualified community is looking at giving the township 15-20 acres, which in addition to the 30 acres given by another developer earlier would make for a good-sized community park.

Acting Chairman Joseph Horvath asked if the two grant applications were mutually exclusive. Beil told him they are not. Beil said he wanted to submit grant applications for both projects because he wasn’t sure which way the township would want to go. Beil said they would be reviewed over the summer and the winning grants should be announced in the fall. The township has the right to refuse the grants, he said, should supervisors deem the park costs too high. Supervisors voted unanimously to let Beil apply for both grants.

Supervisors appointed sewer and water department employee Francis Stauffer to fill a vacancy on the non-uniformed pension committee for 2011. The newly-formed public works union recommended Stauffer for the position, Beil said.

Since phase one of Upper Saucon's Rails to Trails project will open soon, Beil presented supervisors with a draft set of rules and regulations for the new path. He said the draft was based on similar rules prepared by Whitehall, Palmer and Lancaster Townships. Beil said he wanted to see if supervisors were comfortable with the draft before the township spent money to advertise them in ordinance form and paid for the solicitor to review them.

Most notable among the rules were the operating hours of sunrise to sunset, a ban on public smoking and tobacco use, the prohibition of motorized vehicles, a ban of horseback riding, and the prohibition of loudspeakers and public address systems. Beil said representatives at the Rails to Trails meetings have discussed the possibility of residents using the trail to commute to and from work. Township Engineer Dennis Harman said that as a cross-country skier, there was nothing better than getting on fresh snow in the evenings. If the township closed the trail at sunset, Beil said, commuters could not use it after work during winter, since the sun sets near 5 p.m. Horvath noted that other municipalities have

enacted bans on outdoor smoking and supported doing likewise. A resident spoke later in support of a smoking ban, saying that young people who volunteer to clean the park won’t touch cigarette butts. Beil told supervisors that the township currently has a ban on smoking at its buildings and park.

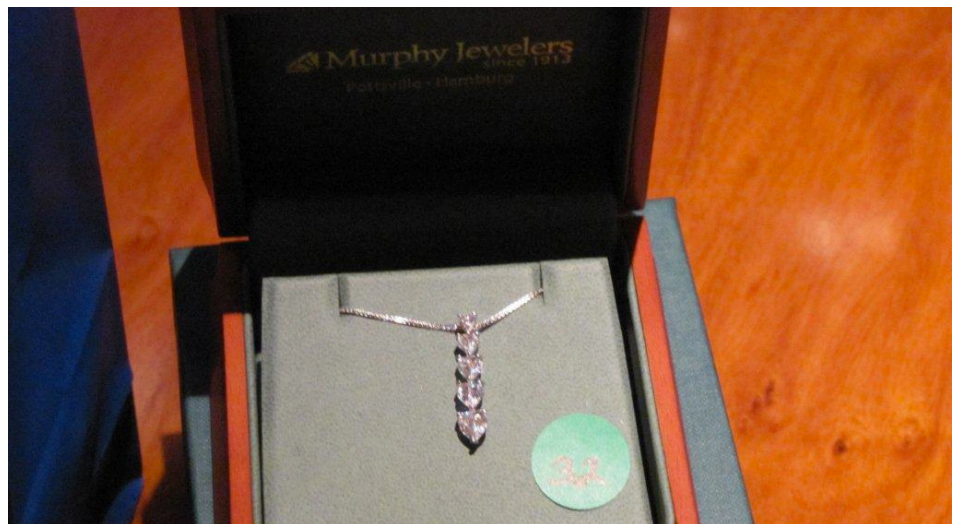
Motorized vehicles will create maintenance and safety problems on the trail, Beil explained. Forbidding horseback riding will upset some people, he said. But Horvath said it would prevent safety, sanitation, and maintenance problems. “These look good to me,” the supervisor commented. Prohibition of loudspeakers and public address systems would prevent protests and other such uses of the trail, which winds through residential areas, Beil said. “It’s a nature trail,” noted Horvath approvingly. Violation of trail rules will carry a maximum \$600 criminal fine and leave the township the ability to sue for property damage. Supervisors will take a look at the draft and discuss them again at their next meeting.

The next Upper Saucon Township Board of Supervisors meeting will be held on April 4 at 6 p.m. at the Township Municipal Building.

# LADIES' NIGHT OUT RAISES MONEY FOR EDUCATION



Southern Lehigh moms turned out Wednesday night for an evening of fun and friends at the Southern Lehigh Education Foundation's 5th Annual Ladies' Night Out at Melt, Level 3. Funds raised went towards programs beyond the scope of school district funding. Ladies pictured include: Jody Wilkins, Jennifer Wescoe-Schaninger, Dr. Trish Colasurdo, and SLEF President Jennifer Johnson, (above left); Shannon Phillips, Corina McCormick, and friend, (above right); Wendy Sinko, Tina Simmons, and Rebecca Davis, (below left). Prizes awarded during the event included jewelry (below right). Photos by Wendy Sinko.

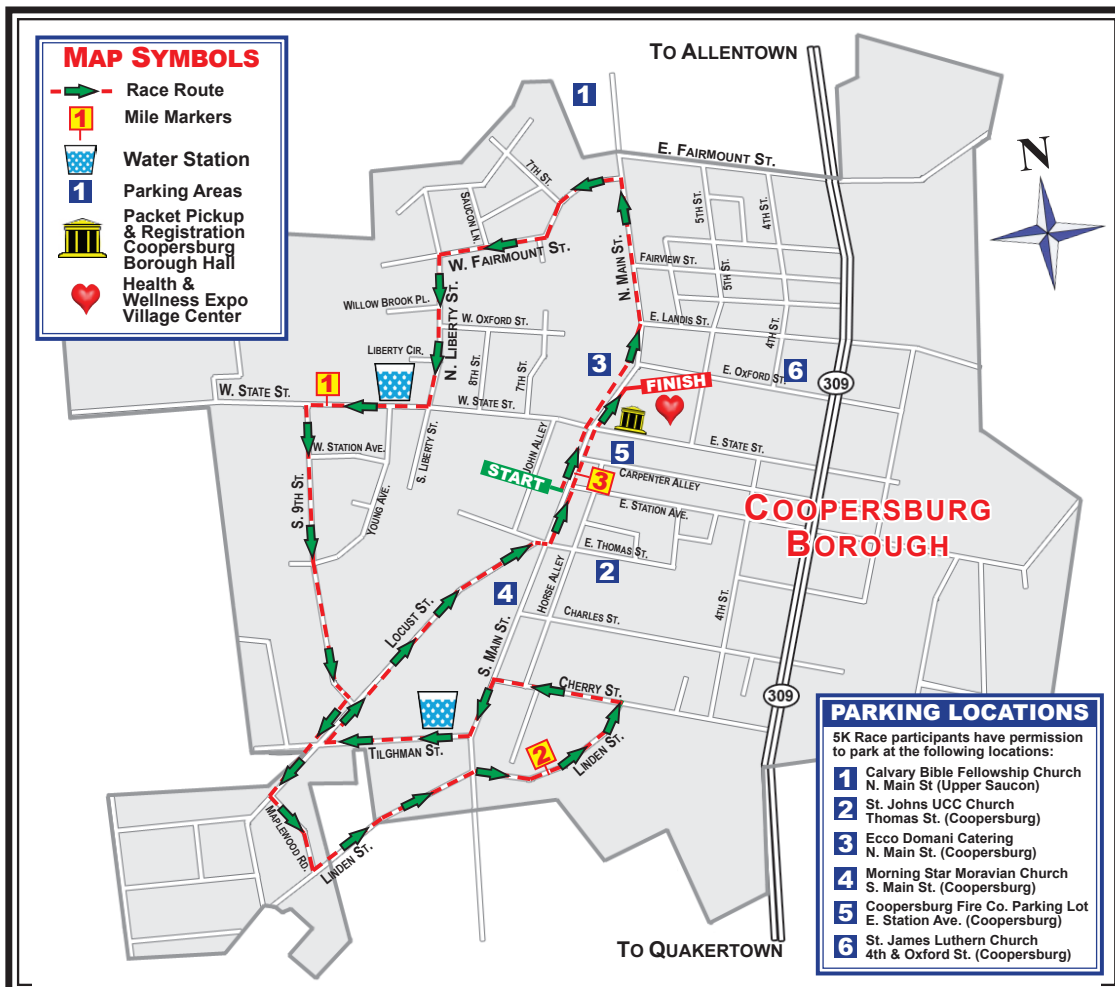


## 5TH ANNUAL COOPERSBURG 5K RUN & HEALTH & WELLNESS EXPO SATURDAY, MAY 28, 2011



Presented by the Coopersburg Business Revitalization Program, a Lehigh County Main Street Program.

LINE UP TIME: 8:00AM ★ OFFICIAL START TIME: 8:10AM



For the latest information please visit [www.Coopersburg.org](http://www.Coopersburg.org)

For race information contact: Jennifer Wescoe-Schaninger  
Race Director  
[jwschaninger@hotmail.com](mailto:jwschaninger@hotmail.com)  
Phone: 484-553-6340



50% of the proceeds benefit the Make-A-Wish Foundation, Pottsville Regional Office, which serves the Lehigh Valley Area.

# OH SNOW, NOT AGAIN



Just when you thought spring had started, another week of wintery weather struck Southern Lehigh. Residents woke up Wednesday to more of the white stuff, and a zoning hearing in Lower Milford was adjourned early due to icy precipitation that night (story on page 7). More snow is expected this weekend. *Photo by Judd Wilson.*



## 3rd Annual Southern Lehigh Kiwanis 5k Run/Walk

- WHO:** All joggers, runners and walkers; registration is limited to 300 participants.
- WHAT:** 5K Run/Walk to benefit Kiwanis Club of Southern Lehigh
- WHEN:** Saturday, May 14th, 2011, 8:30AM
- WHERE:** Upper Saucon Township Community Park; Preston Lane (between Route 378 and Desales University)
- RACE FEE:** **Cash or Check (payable to Kiwanis Club of Southern Lehigh)**  
\$20 if pre-registered, and \$25 on race day (registration fee is non-refundable)
- CHECK-IN:** 7:45 a.m. – 8:15 a.m.
- AWARDS:** Awards will be given to the top male and female finishers in each age group.
- T-SHIRTS:** Available to first 100 registrants—register before April 1<sup>st</sup> for preferred t-shirt size
- ADDITIONAL INFORMATION:** Erin Ofner [eofner15@hotmail.com](mailto:eofner15@hotmail.com) 484-515-5415

\*\*\*Online Registration also available at: [http://www.active.com/event\\_detail.cfm?event\\_id=1939004](http://www.active.com/event_detail.cfm?event_id=1939004)

Name: \_\_\_\_\_ Sex (circle one) M F

Address: \_\_\_\_\_

Age on race day: UNDER 18 18-25 26-40 41-60 61+

Phone #: \_\_\_\_\_ Email: \_\_\_\_\_ Shirt size (circle one): S M L XL

**Waiver--Participants under 18 must have a parent/guardian sign.**

I know that running, jogging or walking in the Kiwanis Club of Southern Lehigh's 5K Run/Walk or any road race is a potentially hazardous activity. I should not enter unless I am medically able and properly trained. I assume all risks associated with the Kiwanis Club of Southern Lehigh's 5K Run/Walk including but not limited to contact with other participants, falls, health risks, foul weather, traffic and road conditions, animals, all such risks being accepted by me. I, for myself and anyone entitled to act on my behalf, waive and release the Kiwanis Club of Southern Lehigh, **Upper Saucon Township.**, any and all sponsors, race organizers, law enforcement, emergency medical personnel, and volunteers, from all claims and liabilities of any kind arising from the Kiwanis Club of Southern Lehigh's 5K Run/Walk.

**Please sign below to agree to the waiver and verify that all above information is correct.**

X \_\_\_\_\_

# Borough Council Discusses Brush and Compost

By Judd Wilson

COOPERSBURG -- Council members here covered a wide variety of topics at Borough Hall Tuesday night.

Lower Macungie Township's Adra Renee Smith, an assistant district attorney for the past 25 years, introduced herself during the public comments portion of the meeting. Smith said she is running for judge of the common pleas court based on her 10,000 criminal prosecutions. She said she'd like to sentence criminals more than prosecute them. Her proudest accomplishment was creation of a DUI central booking center in 1998, which gets police from small municipalities back on the street sooner than they used to years ago. Cops used to spend hours escorting drunk drivers through the whole booking process, Smith said. In addition, Smith said, the center costs taxpayers nothing since it is funded by a fee drunk drivers pay to get their drivers' licenses back.

Councilman Dennis Balascak announced that the health and sanitation committee would meet on March 23 to analyze data from two storm events. Balascak said the council can expect "an extensive report" at its next meeting. Ricki Snyder, water and sewer department superintendent for the borough, said due to snow melt and recent storms borough

well water was 50 feet from the top, which is much higher than normal, he said. Balascak also asked Snyder to look into why the water gauge has malfunctioned recently.

Council members unanimously approved a resolution making Borough Manager Dawn Kresge the borough's agent in the community development block grant application process. Borough Engineer William Erdman said allowing Kresge to sign all the paperwork avoids having to bring each paper to council for its approval. He said the grant request was for approximately \$180,000. The program requires a ten percent cash or in-kind labor match by the borough, Erdman added.

Balascak spoke out in favor of renewing brush pickup service to residents. Councilman Larry Pummer said there needed to be a mechanism for allowing brush pickup but not tree removal. Dennis Nace, highway department superintendent, said in the past residents have put out so much wood or shrubbery to be disposed of that he'd have two workers out each day for two solid weeks putting items through the chipper. Towards the end, he said, he had two crews out at a time. Snyder said while brush pickup is great for storm cleanup, in the past "it just got out of hand."

According to the borough website, branches should be no more than 6 inches in diameter. Council members identified the week of April 25, just after Easter, as the one week the borough would provide the brush pickup service. If people put out more the next week, councilmen told Nace to "let it lay." Mayor Tim Paashaas asked how much the service costs the borough. Balascak told him they could report on it following this year's pickup. It was also announced that the recycling center will open March 26 at 8 a.m.

Kresge reported that Zoning Officer Larry Andes contacted the state police and emergency management agency to see if any Amber Alerts had run on the digital billboard on 309 in Coopersburg. Fred Derby, owner of Coopersburg Construction Corporation and several other companies, owns and operates the billboard, which was the first of its kind in the Lehigh Valley.

Kresge said the state agencies told Andes no Amber Alerts have run on the billboard. Council President Gary Hovis asked Kresge to set up a time for Derby to run a test Amber Alert. The borough approved the billboard several years ago on the condition that Derby run Amber Alerts, said Balascak. No Amber Alerts, no sign, council members said. "We'll shut him down."

Councilman Jack Felch, chairman of the budget and finance committee, reported that last year the borough's pension plans earned 13 percent gains, including 7 percent in the last quarter. The borough has enough money to pay out its pensions and then some, he said. Don't expect 13 percent gains every year though, he added, explaining that those high numbers were largely due to the short-lived effects of an economic recovery following a recession.

On March 11 representatives from eight townships and boroughs met to discuss how to best continue a composting program without county funding. Kresge reported that the municipalities will send a letter to the county stating their intent to form a group and requesting the county's composting equipment. Nace said tub grinders would be shared regionally. Participating municipalities include Upper and Lower Macungie, North Whitehall, Emmaus, Washington, Salisbury, Upper Saucon, Lower Milford, Coopersburg and Allentown. The group still needs to work out who will pay for maintaining the equipment, Nace said.

The next Coopersburg Borough Council meeting will take place on April 12 at 7 p.m. at Borough Hall.

# Geryville Materials Presses Scientist on Quarry Projections

By Judd Wilson

LOWER MILFORD -- The Lower Milford Township Zoning Hearing Board abbreviated its meeting here Wednesday night due to bad weather at 8:25 p.m.

Hydrogeologist Val Britton of NTH Consultants in Exton, Pa. answered Geryville Materials lawyer Stephen Harris' questions about projected water flow at the Geryville Materials site during the two-hour meeting.

During his Feb. 23 testimony, Britton estimated that if quarry operators pumped out groundwater and stormwater from the quarry pit and deposited it elsewhere on the quarry property, the ground there would not be able to soak up all the water. According

to Britton, for every minute the quarry pit would pump out groundwater and stormwater, 25 gallons would stay above ground level, leading to swampy, marshy conditions. 36,000 gallons of water per day would wash toxins from an 1960s-era illegal dump downstream into the Hosensack Creek, he said.

Harris pressed Britton on his gloomy projections Wednesday night by asking him if he had reconnoitered the dump site as part of his calculations. He had not, Britton said, but had relied on the testimony of a local resident. Britton and Harris discussed how water at the old dump site is already at or near ground level. Water pumped out of the quarry pit will infiltrate the ground at the dump site at the same rate it

already does, Britton said, but there will be 36,000 more gallons of water per day to absorb.

Attorneys for the Lower Milford Residents' Association and the township objected to Harris' request that Britton answer questions about a stormwater report he had not been provided with until he was on the stand. "It's over two inches thick," said township solicitor Mark Cappuccio. Patrick Armstrong, representing the LMRA, asked that Britton be given time to review the document. Harris asked Britton if the township engineer had approved the plan, created by the company of Geryville Materials' chief witness, John Ross. Board solicitor Margo Wiener sustained Cappuccio's objection and ordered the cross-examination to move on.

Britton did admit that the problem of excess water would be solved if the quarry pit stopped at 510 feet above sea level rather than continue down to 460 feet above sea level. At 460 feet, however, no matter what the lay of the land may be, groundwater will get sucked down into the cone of influence created by the quarry pit, he said. Britton called his projections "very conservative" in that they did not factor in the runoff from quarry berms.

Board members Girard Graham and Raymond Lapp were not present at the meeting. Alternate member Denise G. Holub attended.

The next Lower Milford Township Zoning Hearing Board meeting will be held April 27 at 6:30 p.m. at the Township Municipal Building.

**GRADUATE** FROM PG 1

kisses and peanut butter cups are to Americans. The difference is difficult to comprehend. And yet, there are thousands of American servicemen and women who are living and working in the midst of these foreign cultures that seem to differ so enormously from our own. But Goodpaster's intelligence work abroad is not only assisting our nation in an on-going war effort, it is helping him reach a personal goal this May, his Penn State diploma.

Like many Penn State students past and present, Goodpaster chose to pursue his college education while simultaneously serving in the military. In 2003, he entered the National Guard instead of active duty so that he could complete his educational goals, which began at the Harrisburg campus in 2004. However, a string of deployments and military training caused his college career to stop and restart a number of times.

During the spring 2010 semester, Goodpaster, now at the rank of chief warrant officer 2, married his wife Jennifer, a native of Nazareth, and moved to the Lehigh Valley where he saw the opportunity to complete his information sciences and technology degree at the Lehigh Valley campus.

"With my wife being from the Lehigh Valley and the Lehigh Valley campus offering a bachelor's degree in IST, it made perfect sense to move here and finish my degree," says Goodpaster. "The fact that Penn State offers campuses all over the



**Chief Warrant Officer 2 David Goodpaster is a senior counterintelligence warrant officer with the Pennsylvania Army National Guard. Penn State Lehigh Valley officials worked with him to use his experience in Iraq towards his graduation requirements.**

*Photo courtesy of David Goodpaster.*

state, and courses online, has really been a benefit to my situation."

After sitting down to evaluate his credits with Carolina McCluskey, assistant professor of computer science and IST program coordinator, they discovered that Goodpaster was just a few credits shy of qualifying for spring 2011 graduation. He was missing two required classes in, of all things, foreign culture.

"It seemed almost silly that someone with actual experience living and working in a number of

foreign countries would have to put off graduating a little longer because of these requirements," says McCluskey. "So we came up with a plan to get him graduated!"

McCluskey suggested that Goodpaster create and deliver two presentations (March 28 and April 25) to the campus about terrorism in the Middle East that would count as an IST special topics course, and develop them in a way that can be used in future classes. The availability of an online course in civic engagement would satisfy the other credits needed.

"My presentations in March and April will bring together much of the research I've done and my exposure to the cultures of many Middle Eastern countries to offer a perspective of terrorism that might be unfamiliar to many. It will focus mostly on groups in Iraq, like Al Qaeda and Hezbollah, and discuss how their cultural background affects their organizations, and how some of them are or aren't employing technology in their initiatives," said Goodpaster.

Though it has taken longer than the typical four years to reach this point, Goodpaster is quick to note that receiving his bachelor's degree is only the first step. He has plans not only to continue his military career, but also to pursue a master's degree through Penn State's World Campus and stay connected through the Alumni Association.

"I am so grateful to Penn State for being so flexible and willing to work with me while I serve in the military. From the tuition assistance, to offering credit for what I've done in the military, to being able to take leave when necessary, Penn State is a very military-friendly institution. It has given me the opportunity to graduate a little earlier than I expected."

For more information on this story, contact University Relations at 610-285-5067 or e-mail [aag18@psu.edu](mailto:aag18@psu.edu). To learn more about Penn State Lehigh Valley, please visit [www.lv.psu.edu](http://www.lv.psu.edu), call 610-285-5000, or stop by the campus at 2809 Saucon Valley Rd. in Center Valley.

## Chancellor Responds to Governor's Proposed Budget Cuts

By State of the Valley Staff  
*Courtesy of State of the Valley*

**PENN STATE LEHIGH VALLEY** -- Chancellor Ann Williams says she's confident that the campus will remain open, according to a March 23 Morning Call article. Her statement comes after the announcement by University president Graham Spanier that the unprecedented budget cuts to education in Pennsylvania may result in the closing of some Penn State campuses.

Dr. Williams told The Morning Call that the campus has had an increase in enrollment of 32 percent since 2000. The campus plans to have a student body of

1500 students by 2016. In an email to the campus community on March 8, Williams contrasted the growth at the Lehigh Valley campus with sister campuses that are not growing

Twelve of nineteen commonwealth campuses have lost students. The campuses that have seen the most dramatic losses in enrollment include Shenango (30 percent), York (24 percent) and Worthington Scranton (19 percent), according to The Morning Call article.

Wes Herrmann, a freshman at Penn State Lehigh Valley, said, "I was a little scared when they released the new proposed budget because I feared the school may close and

I would have to find a new college to attend." Another student, David Amerman, a sophomore, said, "I was pretty confident that they would not close a campus that they just poured all this effort into."

Penn State Lehigh Valley has made significant improvements since moving from its previous location in Fogelsville to Center Valley, into the building previously occupied by Lehigh Valley College. At the new location there is a renovated fitness center, a library and an art gallery.

Penn State University is already one of the most expensive state schools in the country. Regarding the potential for tuition increase,

Ashley Insalaco, a sophomore, said, "There is concern about the tuition increase."

A bus will be headed to Harrisburg from the Lehigh Valley campus on April 5 to participate in Capital Day, an opportunity for students and alums to appeal to legislators to keep Penn State's budget appropriation strong. Students can sign up at Student Affairs for just \$5.00. The fee includes a round trip bus ride, free Creamery ice cream and lunch.

To learn more about Penn State Lehigh Valley, please visit [www.lv.psu.edu](http://www.lv.psu.edu), call 610-285-5000, or stop by the campus at 2809 Saucon Valley Rd. in Center Valley.



# Watershed Conference Highlights New Initiatives

By Judd Wilson

BETHLEHEM -- Local environmental groups held their fourth Lehigh Valley Watershed Conference here on March 11 at Lehigh University. The Lehigh County Conservation District, Northampton County Conservation District, Saucon Creek Watershed Association, Watershed Coalition of the Lehigh Valley, Wildlands Conservancy, and Lehigh University organized the event.

Jim Wilson, watershed specialist with the Northampton County Conservation District, talked about how environmental groups have worked together with PPL Electric Utilities to meet federal standards on brush clearing near electric power lines while also protecting environmentally sensitive areas. Unique partnerships and approaches to conservation are in the works around the Lehigh Valley, he said.

Dan Kunkle, executive director of the Lehigh Gap Nature Center, introduced researcher

Meredith Wright and the Eastern Pennsylvania Phenology Project. Phenology is the study of the timing of natural events, such as the first snowfall of the year. The project's goal is to recruit a large number of citizen-scientists to record the natural events that occur in their backyards and communities in order to get a comprehensive look at how climate change might be occurring in the Lehigh Valley.

With that data, Kunkle said, environmental groups could offer concrete policy advice to political leaders. Wright said certain species and events will be tracked due to their significance and ease of identification. Fact sheets for each species will be provided, along with data sheets to collect observations. "If people can get outside, enjoy nature, and have fun, what can be better than that?" she said. To learn more or to participate in the Eastern Pennsylvania Phenology Project, email [phenology@lgnc.org](mailto:phenology@lgnc.org) or visit [watchingtheseasons.blogspot.com](http://watchingtheseasons.blogspot.com).

Rachel Hogan Carr, director of environmental outreach for the Nurture Nature Foundation and director of the Nurture Nature Center, told listeners about FocusOnFloods.org, a website designed to help people living in the Delaware River Valley lessen the loss of periodic flooding there. Carr's Easton-based group suffered damage to its building during the 2006 Easton flood, so it's not just an academic question for them, she said.

The Nurture Nature Foundation launched FocusOnFloods.org as a flood safety and awareness campaign with a National Oceanic and Atmospheric Administration grant. Floods are inevitable, she said, and are caused by more than just development. The campaign includes flood forums to bring decision makers and community members together. To learn more, go to [www.FocusOnFloods.org](http://www.FocusOnFloods.org) or contact Carr at 610-253-4432.

Lehigh University graduate student Johanna Blake presented the findings from her study

of metals transport in large, fluvial systems near Palmerton. Specifically, she observed the levels of metals such as zinc and lead in the Lehigh River from Lehigh to Walnutport, including the Pohopoco and Aquashicola tributaries. Eighty years of zinc smelting operations alongside the river resulted in a 2.5 mile-long, 255 acre slag pile, potentially exposing residents downstream to water contamination.

What Blake found, however, was that zinc levels in the river and tributaries were far below federal standards for safe drinking water and the level deemed safe for aquatic life. When considering the presence of the zinc smelting plant, Blake said "the numbers look pretty good." Interestingly, she discovered that the amount of lead in the water decreased slightly once the river widened downstream, perhaps due to a slower water velocity. She also found that zinc appeared in groundwater in larger, particulate form, whereas it dissolved in the Aquashicola.

## Pennsylvania Senate Highlights

*From the Office of State Sen. Bob Mensch*

Gov. Tom Corbett unveiled his proposed \$27.331 billion General Fund budget for Fiscal Year 2011-12 during a joint session of the General Assembly on March 8. The Governor's proposed budget appropriately reflects the condition of Pennsylvania's economy. The Governor's budget proposal represents an \$866 million reduction in spending from the current fiscal year.

The proposal is balanced, includes "no gimmicks," and does not call for increases in taxes or fees. Those are real changes from the past eight years under Gov. Rendell. It is important that government – at all levels – live within its means and that appears to be the message at the heart of this budget proposal.

Gov. Corbett is proposing \$2.6 billion in cuts through eliminating 103 line items, reducing 154 line items and consolidating 55 line items. The budget proposal reduces general government operation costs by an average of 2.1 percent across the board.

Sen. Mensch was pleased to see the Governor setting new priorities for economic development and job creation in Pennsylvania. Those are goals that Sen. Mensch certainly supports as the co-chair of the Economy, Business and Jobs Caucus. The Governor's proposals to merge and streamline some existing operations in the Department of Community and Economic Development would save money, reduce the duplication of services, and position the Commonwealth to act expeditiously when opportunities arise.

The Senate's consideration of the Governor's 2011-12 budget started with 10 days of public hearings by the Senate Appropriations Committee, which began on March 16 and go through March 31. As a member of the Appropriations Committee, Sen. Mensch looks forward to reviewing the Governor's spending plan with Administration officials during those budget hearings. Information and video from previous hearings are available at [www.pasenategop.com](http://www.pasenategop.com).

Pennsylvania has modified its filing deadline from Friday, April 15 to Monday, April 18, 2011 to coor-

dinate with that of the IRS. The extension is based upon the Washington, D.C. holiday, Emancipation Day. By law, District of Columbia holidays impact tax deadlines in the same way as federal holidays; therefore, taxpayers will have three extra days to file this year.

Gov. Tom Corbett recently ordered sweeping changes in the two state departments responsible for overseeing abortion clinics in Pennsylvania.

A Philadelphia County grand jury report released in January detailed the horrors found inside the Women's Medical Society, a clinic run by Dr. Kermit Gosnell. At least two women died as a result of botched late-term abortions, according to the grand jury report, some babies were born alive and then killed by having their spinal cords snipped by scissors and untrained personnel performed medical procedures, sometimes using unsterilized implements that spread venereal disease. Gosnell and several employees have been charged with murder and numerous other offenses in the case.

The grand jury also revealed that complaints about unsafe and unsanitary conditions went unheeded for more than a decade until drug investigators finally put a stop to the business in February 2010. Seven state employees have either resigned or been terminated since the situation came to light.

Gov. Corbett ordered changes in the Department of Health and Department of State, including new controls and conditions designed to protect the health and safety of women who use these facilities in the future. These changes include thorough and prompt investigations of complaints and stepped up on-site inspections of facilities. The Senate Consumer Protection and Professional Licensure Committee and the Senate Public Health and Welfare Committee held a joint hearing on February 8 to take testimony on the grand jury investigation into the Women's Medical Society abortion clinic in Philadelphia.

To learn more, go to [www.senatormensch.com](http://www.senatormensch.com) or call our Lehigh County office at 610-965-1466.

## House Budget Hearings Continue

From the Office of State Rep.  
Justin Simmons

This week, the House continued its examination of Gov. Tom Corbett's budget proposal by hearing testimony from officials with the Pennsylvania Department of General Services, State Employees' Retirement System and Public School Employees' Retirement System, Pennsylvania State Police, Department of Corrections Board

of Probation and Parole, Pennsylvania Department of Transportation (PennDOT), and Insurance Department.

John Wetzel, acting secretary of the Department of Corrections, urged lawmakers to work toward clarifying definitions of non-violent offenders. The aim would be to move non-violent offenders to institutional and community facilities to receive proper rehabilitation treat-

ment, thus reducing overcrowding in the prison system. Corrections remains the third largest expenditure of the General Fund, and Pennsylvania has been exporting prisoners to other states to avoid further overcrowding in its own facilities.

Officials with PennDOT testified about the need for \$3.5 billion to fund the state's ailing infrastructure – a question which has gone unset-

tled since the federal government denied plans to toll Interstate 80.

Hearings will continue next week and can be watched LIVE at your computer at PAHouseGOP.com beginning at 9:30 a.m. on Monday.

To learn more, visit [www.repsimmons.com](http://www.repsimmons.com) or call 610-861-5201.

## Letter to the Editor: Look at the Facts

To the Editor:

Mr. Ohl (Southern Lehigh Tribune, March 19, 2011) expressed his opinion about the way Lower Milford Township supervisors are spending our tax dollars. In fairness, one should weigh his opinion in the light of the actual situation. Lower Milford Township is the only Township in Lehigh County that assesses a special Fire tax equal to 50% of the local real estate tax to support the Fire Company. This, despite the fact that it is a private organization, not subject to audit by the Township to determine how well it is run. The Police Department requires almost all of our collected real estate tax to pay for it. The serious crime rate is not significantly different than the surrounding communities that do not have a police force nor is it significantly different from the time when Chief Ohl was our part time police officer.

He questions the need for our administrative staff. It is comparable in size to other Townships with similar demographics. Our Township Manager is paid significantly less than those in other Townships. Our Zoning Officer is part time and spends his remaining time managing our road crew – two essential functions of local government. In terms of benefits, pensions are set by the State. The Township does not pay for them. Cutting health care would mean reducing benefits for the police officers also. This seems contradictory to Mr. Ohl's wishes.

In terms of sewer costs, the State determines how costs are allocated. He is not paying for multi-pumps; he is paying for maintenance and loan repayments for the project based on the number of apartments he owns. He is not different than other businesses in

Limeport. To treat him differently is to redistribute the costs to his neighbors. While he can recover his costs by raising rents, his neighbors actually live in their homes and have to absorb the costs.

Finally, his complaint about the costs associated with defending our zoning ordinances seems short-sighted. A Township must defend its ordinances or be overrun by developers seeking to make a profit at the expense of residents. Permitting a quarry to exist without considering the harm to the residents of Lower Milford seems to be folly. The residents up to a mile from the quarry would lose over 6.7 million dollars in real estate value. The Township would lose over 10 million dollars in real estate value overall. The loss in local real estate taxes, school and county taxes would not be recovered by the increase in

taxes generated from the quarry. In addition, the damage to our water, the damage from blasts affecting historical homes, and risk attendant with adding large trucks at the rate of one every minute and a half to one of the most dangerous highways in America seems something the Township should fight. Mr. Ohl rightly says that firefighters and police put their lives on the line. However, not having the staff or the will to preserve our ordinances against dangerous development puts our lives and those of our children and grandchildren on the line. Hopefully, Mr. Ohl can respect the wishes of those who actually live in the Township to protect themselves.

Sincerely,

Edward Matulevicius  
Coopersburg, Pa.

## Letter to the Editor: Keep Mobile Agriculture Lab

To the Editor:

Due to tough economic times locally, throughout the state and across the nation, many businesses, cities, townships and schools are being forced to cut back funding for important programs. This appears to be the case in the Southern Lehigh School District, where budget cuts are expected to eliminate visits from the Pennsylvania Friends of Agriculture Foundation's Mobile Agriculture Education Science Lab.

It's disappointing that the school district is recommending no longer funding the visits by the Ag Science Lab, which provided

a special learning experience for more than 1,000 students during the 2009-2010 school year.

Discussion of this matter has surfaced a point that needs to be addressed. In an explanation of the proposed budget cuts, a report by the Southern Lehigh Board of Education Budget and Finance Committee included the following passage "The Mobile Ag Lab is not necessarily staffed by a person with a degree in agriculture or experience in the field of agriculture." This statement diminishes the training, experience and commitment of the people who staff the Ag Labs. The fact is that the Lab is staffed by a Pennsylvania-certified school

teacher who has been trained specifically on the agriculture curriculum provided by the Mobile Ag Lab. The curriculum is aligned with the state standards and has been endorsed by both the Pennsylvania Department of Agriculture and the Pennsylvania Department of Education.

Schools across the Commonwealth recognize that a visit by an Ag Lab typically produces an exciting and memorable learning experience that is not easily replicated in a regular classroom at such a low cost. Nearly 100,000 students across Pennsylvania benefit each year from a Mobile Ag Science Lab visit to their school.

Finally, I will say that it is encouraging to hear that the School District is planning on introducing its own program. This action indicates that the administration understands the importance of our children learning about food and the contributions made by farmers. I am skeptical, however, that such instruction can be provided at a lower cost and in the same invigorating manner that is customary for the Mobile Ag Science Lab.

Sincerely,

Arland Schantz  
Zionsville, Pa.

**Contact Information**

Publisher - Judd Wilson  
Phone - (484) 632-6108  
Email - solehitribune@gmail.com  
Mail - P.O. Box 4, Limeport, PA  
18060

**Policies**

Distribution - Currently, newspapers are published online weekly at [www.solehi.com](http://www.solehi.com).

In the future, newspapers will be distributed weekly, at no charge to readers, at select locations throughout the Southern Lehigh area.

Letters to Editor - Please submit letters to the editor via email or mail with your name and mailing address.

Advertisements - Please submit requests via phone or email before Tuesday 4 p.m. for consideration in the next issue.

Southern Lehigh Tribune reserves the right to edit or refuse letters and advertisements.

Letters and advertisements do not necessarily reflect the views of the Southern Lehigh Tribune.

All material copyrighted 2011 by Southern Lehigh Tribune, LLC.

## Churches

**Calvary Bible Fellowship Church**

[www.calvarybfc.org](http://www.calvarybfc.org)  
8:30 a.m. worship  
9:50 a.m. Sunday School  
11:10 a.m. worship  
6872 North Main Street  
Coopersburg, PA 18036

**Chestnut Hill Church**

[www.chestnuthillchurch.org](http://www.chestnuthillchurch.org)  
8 a.m. worship  
9 a.m. adult Bible Study  
10 a.m. worship (1st Sunday)  
6870 Chestnut Hill Church Road  
Coopersburg, PA 18036

**Church of the Assumption of the Blessed Virgin Mary**

[www.assumptionbethlehem.com](http://www.assumptionbethlehem.com)  
Sat. 5 p.m. Mass  
Sun. 7:30, 10, 11:30 a.m. Mass  
4101 Old Bethlehem Pike  
Bethlehem, PA 18015

**Cornerstone Presbyterian Church**

[www.cornerstonepca.net](http://www.cornerstonepca.net)  
10 a.m. worship  
5900 Old Bethlehem Pike  
Center Valley, PA 18034

**Faith United Church of Christ**

[www.faithchurchucc.org](http://www.faithchurchucc.org)  
9 a.m. Sunday School  
10:15 a.m. worship  
5992 Route 378  
Center Valley, PA 18034

**Family Life Fellowship**

9 a.m. Sunday School  
10:30 a.m. worship  
212 N. Main St.  
Coopersburg, PA 18036

**Friedens Lutheran Church**

9 a.m. worship  
2451 Saucon Valley Road  
Center Valley, PA 18034

**Locust Valley Chapel**

[www.locustvalleychapel.org](http://www.locustvalleychapel.org)  
9:30 a.m. worship  
11 a.m. discipleship  
5936 Locust Valley Road  
Coopersburg, PA 18036

**Morning Star Moravian Church**

8:30 a.m. Sunday School  
10 a.m. worship  
234 South Main Street  
Coopersburg, PA 18036

**Saucon Mennonite Church**

[sauconmennonite.org](http://sauconmennonite.org)  
9:15 a.m. worship  
10:45 a.m. Sunday School  
6639 North Main Street  
Coopersburg, PA 18036

**Springfield Church of the Brethren**

[www.springfieldcob.com](http://www.springfieldcob.com)  
9 a.m. Sunday School  
10 a.m. worship  
920 Passer Road  
Coopersburg, PA 18036

**Springfield Mennonite Church**

[www.springfieldmennonite.org](http://www.springfieldmennonite.org)  
8:30 a.m. traditional worship  
9:45 a.m. Sunday School  
11 a.m. contemporary worship  
1905 Pleasant View Rd  
Coopersburg, PA 18036

**St. Joseph's Roman Catholic Church**

Sat: 5:15 p.m. Mass  
Sun: 8, 9:30, 11 a.m. Mass  
5050 St. Joseph's Road  
Coopersburg, PA 18036

**St. James Lutheran Church**

[www.stjameschurch18036.com](http://www.stjameschurch18036.com)  
8 a.m. worship  
9:15 a.m. Sunday School  
10:45 a.m. worship  
333 E. Oxford Street  
Coopersburg, PA 18036

**St. John's United Church of Christ**

[www.stjohnsuccoop.org](http://www.stjohnsuccoop.org)  
10:30 a.m. worship  
538 East Thomas Street  
Coopersburg, PA 18036

**St. Paul's (Blue) Lutheran Church**

9 a.m. Sunday School  
10:30 a.m. worship  
5900 Applebutter Hill Road  
Coopersburg, PA 18036

*Is your church in the Southern Lehigh area and not listed? Please contact us at [solehitribune@gmail.com](mailto:solehitribune@gmail.com) or 484-632-6108 to be added.*

## Schools

**DeSales University**

[www.desales.edu](http://www.desales.edu)  
610-282-1100  
2755 Station Ave.  
Center Valley, PA 18034

**Hopewell Elementary School**

[slsd.org/HopewellElementary.cfm](http://slsd.org/HopewellElementary.cfm)  
610-791-0200  
4625 W. Hopewell Rd.  
Center Valley, PA 18034

**Liberty Bell Elementary School**

[slsd.org/LibertyBell.cfm](http://slsd.org/LibertyBell.cfm)  
610-282-1850  
960 W. Oxford St.  
Coopersburg, PA 18036

**Lower Milford Elementary School**

[slsd.org/LowerMilford.cfm](http://slsd.org/LowerMilford.cfm)  
610-965-4095  
7350 Elementary Rd.  
Coopersburg, PA 18036

**Penn State University Lehigh Valley**

[www.lv.psu.edu](http://www.lv.psu.edu)  
610-285-5000  
2809 Saucon Valley Rd.  
Center Valley, PA 18034

**Southern Lehigh Intermediate School**

[slsd.org/Intermediate.cfm](http://slsd.org/Intermediate.cfm)  
610-861-4040  
5438 Route 378  
Bethlehem, PA 18015

**Southern Lehigh Middle School**

[slsd.org/MiddleSchool.cfm](http://slsd.org/MiddleSchool.cfm)  
610-282-3700  
3715 Preston Lane  
Center Valley, PA 18034

*Is your school in the Southern Lehigh area and not listed? Please contact us at [solehitribune@gmail.com](mailto:solehitribune@gmail.com) or 484-632-6108 to be added.*

**Southern Lehigh High School**

[slsd.org/HighSchool.cfm](http://slsd.org/HighSchool.cfm)  
610-282-1421  
5800 Main St.  
Center Valley, PA 18034

**Southern Lehigh School District Administrative Offices**

[slsd.org/districtandboard.cfm](http://slsd.org/districtandboard.cfm)  
610-282-3121  
5775 Main St.  
Center Valley, PA 18034

**Strayer University**

[www.strayer.edu/allentown](http://www.strayer.edu/allentown)  
484-809-7770  
3800 Sierra Circle, Ste. 300  
Center Valley, PA 18034

# Pacillo, Kavetski, Diffenderfer Named Athletes of the Week

By BJ Spigelmyer  
Courtesy of DeSales University

ANNVILLE, PA. – Sophomore Colby Pacillo and junior Jack Kavetski of the DeSales University baseball team, and freshman Katlyn Diffenderfer of the DeSales University women's track & field team were each honored on Tuesday afternoon being named the Freedom Conference Pitcher and Hitter of the Week and women's track & field Athlete of the Week as announced by the conference office.

Diffenderfer got off to a fast start in the outdoor season placing among the top eight in four events at the Roanoke College Invitational on Saturday. She was second in both the 100 and 200 meters while placing fourth in the pole vault and seventh in the long jump. Her time in the 100 was just .01 off the school-record time and her time



DeSales athletes Colby Pacillo (above), Jack Kavetski (below left), and Katlyn Diffenderfer (below right) won Freedom Conference honors on Tuesday. Photo by Pat Jacoby.

in the 200 meters tied the school record.

Pacillo continued his strong start to the year earning his second win of the season in the series-clinching win over Manhattanville March 19. He tossed six innings allowing just five hits and striking out four. He only allowed two runners to reach second base in the win improving to 2-0 on the year with a 1.47 ERA.

Kavetski was the catalyst at the top of the lineup all weekend, batting .500 and posting an on-base percentage of .833 leading the Bulldogs to two wins in the three-game series with Manhattanville College. He scored six runs and stole one base, while also registering 10 assists and six putouts with no errors at second base. He was hit by a pitch six times in the three-game series.



## Join in the Fun With the Southern Lehigh Tribune!

As the Southern Lehigh Tribune grows, please join in the fun to promote your favorite events, people, places, and organizations!

**Advertisements:** Bring positive attention to your business or organization by reaching out to the Southern Lehigh Tribune's readers. With over 8,700 visits to our website, [www.solehi.com](http://www.solehi.com), in only six months, the Tribune is an effective way to reach your community. Join us as we begin weekly printing and distribution to see your advertisement reach thousands more Southern Lehigh customers.

**Announcements:** Announce an engagement, wedding, or anniversary. Please send a photo, a description, and specify where the

person(s) live, work, or grew up in the Southern Lehigh community.

**Contributors:** Know of something you'd like the Tribune to cover? Join the fun as a contributor on your favorite local topics -- business, government, sports, you name it -- and see your articles published weekly!

**Letters to the Editor:** Voice your opinion on topics affecting Southern Lehigh. Please include your name and specify where you live, work, or grew up in the Southern Lehigh community.

**Milestones:** Commemorate your birthday, announce a new birth, or honor your recently departed loved one. Please let us know how your loved one is connected with the

Southern Lehigh community. For birthdays, please send your name and date of birth. For new births, please send the baby's name, date of birth, height, and weight. For obituaries, please send name, dates of birth and passing, a description and photo.

**Pet of the Week:** Celebrate your favorite dog, cat, or other critter by sending in your favorite pet photo and telling us why your pet ought to be Southern Lehigh's "Pet of the Week." No pet is too small or too exotic. Please specify your pet's name, age, and breed. Also include your name and specify where you live, work, or grew up in the Southern Lehigh community. Each week's winning pet will have its photo published in the Southern Lehigh Tribune.

Announcements and Milestones are all free of charge, on a first-come, first-served basis. Space is limited. Along with Letters to the Editor and Pet of the Week submissions, Announcements and Milestones may be edited for spelling, propriety, and according to space limitations. All submissions become the property of the Southern Lehigh Tribune.

Advertising rates are available by contacting Judd Wilson at [solehitribune@gmail.com](mailto:solehitribune@gmail.com) or at (484) 632-6108.

Send submissions to the Southern Lehigh Tribune at [solehitribune@gmail.com](mailto:solehitribune@gmail.com), P.O. Box 4, Limeport, PA 18060, or (484) 632-6108.

# DeSales Wins Doubleheader Over Manhattanville

By BJ Spigelmyer  
*Courtesy of DeSales University*

DESALES UNIVERSITY – After dropping its Freedom Conference opener on March 18, the DeSales University baseball team struck back the next afternoon, taking both ends of a doubleheader with Manhattanville College, to take two of three in the weekend series.

The Bulldogs (6-5, 2-1 Freedom) pitched masterfully in both games allowing just two runs all afternoon, one of which was unearned. The staff combined to walk just three over 14 innings, striking out 11. Manhattanville falls to 8-3 overall and 1-2 in the conference with the two losses.

In the day's opener, the Valiants jumped ahead early, scoring once in the top of the first inning on a Bulldog error with two out in the inning. But DeSales took the lead with two runs in the bottom of the



**Southern Lehigh native and DeSales senior Doc Neiman had two hits, four runs scored, and three RBIs in a three-game set with Manhattanville last weekend.** *Photo by Pat Jacoby.*

first inning on a two-RBI single from junior Jason Hadinger after DSU loaded the bases with a walk and two hit batters. The Bulldogs added a run in the third on another

RBI hit from Hadinger and plated two more runs in the sixth on an RBI base hit from sophomore Chris Zucchi, who later scored on a wild pitch.

Sophomore Dan Gayeski earned his first win of the season, going six innings allowing six hits and one unearned run, striking out five and walking two. Senior Doc Neiman scored twice in the win, while Hadinger and Zucchi each had two hits and combined to knock in four runs.

In the second game, the Bulldogs scored twice in the first, twice in the second, and four more times in the third to take an 8-0 lead and never looked back. Sophomore Colby Pacillo allowed five hits and one run over six innings, striking out four and walking just one.

Junior Jack Kavetski finished with three runs scored out of the lead-off hole, Neiman had two hits and an RBI, sophomore Derek Chrismer had two RBIs, and freshman Kyle Kromberg also knocked in two runs as 10 different players had hits in the 12-hit attack.

# Late Rally Lifts Marymount Past DeSales, 12-8

By BJ Spigelmyer  
*Courtesy of DeSales University*

ARLINGTON, VA. – Five straight goals by Marymount University at the end of the third and start of the fourth period broke a tie at six in a 12-8 win over the DeSales University men's lacrosse team in non-conference action March 19.

Trailing by three goals after the first period, DeSales (0-4) rallied for four goals in the second period to pull within one, 5-4, at the break. Two goals to start the third period tied the game at six before two goals with under two minutes left and three more to start the fourth period pushed Marymount (2-6) up 11-6 before the final 12-8 margin was posted.

Junior Tony Fabrizio led the Bulldogs with three goals on the offensive end. Also scoring goals were sophomore James Guerrier, freshman Charlie Wilmer, senior Donald Clemens, sophomore Jarrod Wiedow, and freshman Bruce Peditto. James Guerrier and junior Brendan Guerrier each had assists with Brendan tallying two.

Sophomore Brennan Gmeiner won 12-of-22 face-offs and had seven ground balls, Brendan Guerrier picked up six ground balls, senior Joe Paugh had three ground balls, and senior Justin Campanelli made 10 saves in goal.

The Bulldogs return to action on Saturday when they host Misericordia College at 1 p.m.

## LOCAL STANDINGS



### Baseball

|          |   |   |
|----------|---|---|
| Solehi   | 0 | 0 |
| Wilson   | 0 | 0 |
| Saucon   | 0 | 0 |
| Palisad. | 0 | 0 |
| Salisb.  | 0 | 0 |

### Softball

|          |   |   |
|----------|---|---|
| Solehi   | 0 | 0 |
| Wilson   | 0 | 0 |
| Saucon   | 0 | 0 |
| Palisad. | 0 | 0 |
| Salisb.  | 0 | 0 |

### Boys' Tennis

|          |   |   |
|----------|---|---|
| Solehi   | 1 | 0 |
| Morav.   | 1 | 0 |
| Saucon   | 0 | 1 |
| Salisb.  | 0 | 1 |
| Palisad. | 0 | 0 |



### Baseball

|         |   |   |
|---------|---|---|
| Miseri. | 9 | 3 |
| Wilkes  | 8 | 4 |
| Manht.  | 8 | 4 |
| FDF     | 6 | 4 |
| DeSales | 6 | 6 |

### Softball

|         |   |   |
|---------|---|---|
| Eastern | 8 | 4 |
| DelVal  | 7 | 5 |
| Miseri. | 5 | 5 |
| King's  | 4 | 4 |
| DeSales | 3 | 5 |

### Mens' Lacrosse

|         |   |   |
|---------|---|---|
| Miseri. | 4 | 1 |
| FDF     | 3 | 2 |
| LebVal  | 3 | 3 |
| Widen.  | 2 | 2 |
| DeSales | 0 | 4 |